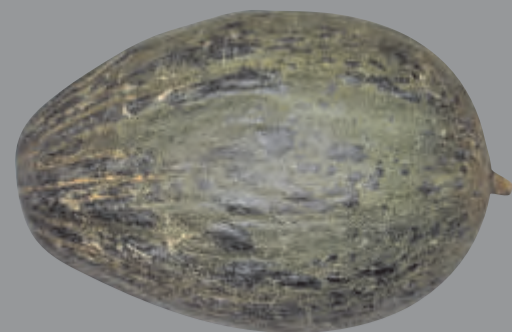


MELÃO PELE DE SAPO

Formato

Qualidade da conformação do fruto

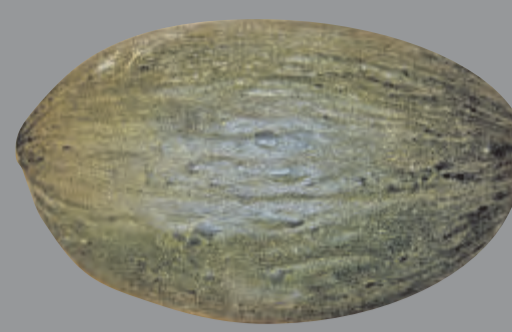


Assimétrico

1

2

3



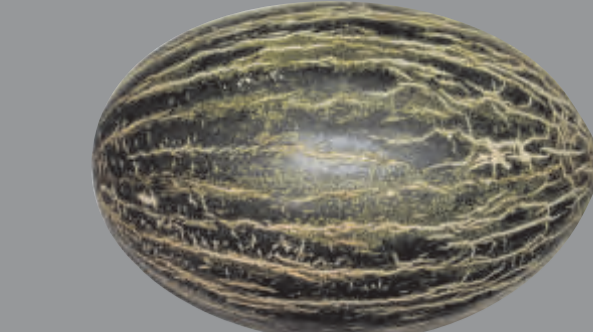
Pouco Simétrico

4

5

6

7



Simétrico

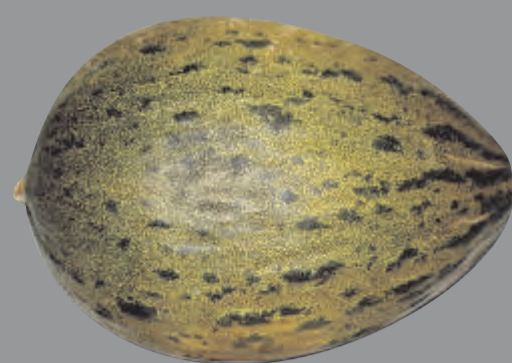
8

9

10

Coloração

Intensidade da coloração da casca do fruto

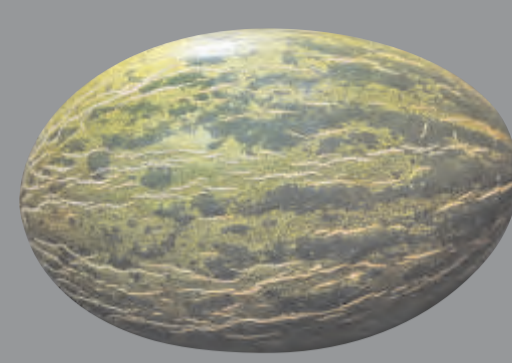


Amarela

1

2

3



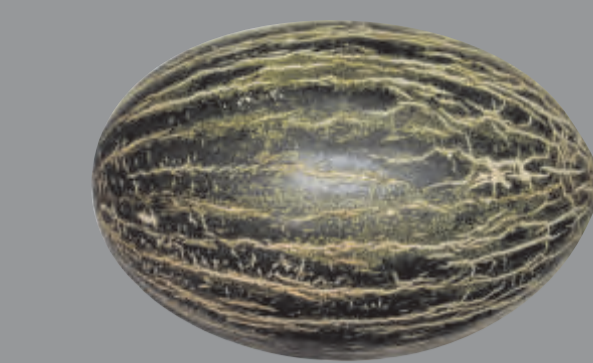
Verde amarelada

4

5

6

7



Verde

8

9

10

Textura

Rugosidade da superfície da casca do fruto



Rugosa

1

2

3



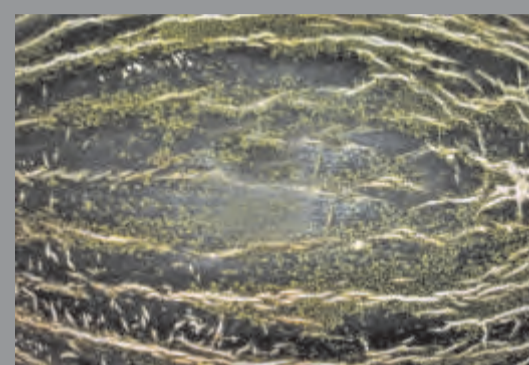
Levemente Rugosa

4

5

6

7



Lisa

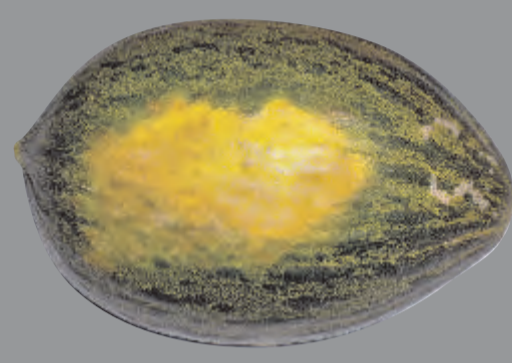
8

9

10

Barriga Amarela

Gravidade da ocorrência de barriga Amarela

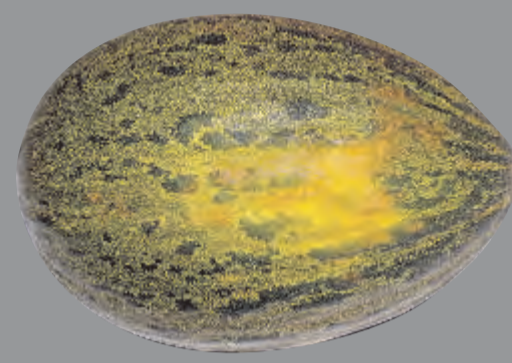


Muito Aparente

1

2

3



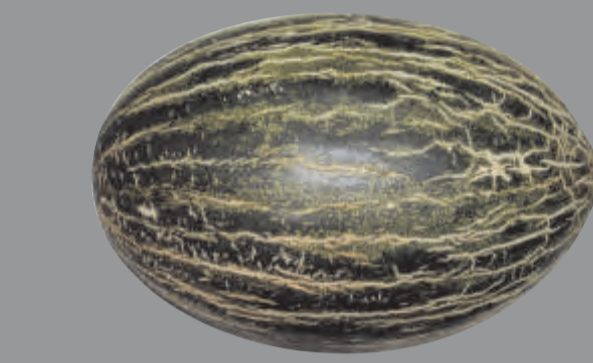
Aparente

4

5

6

7



Ausente

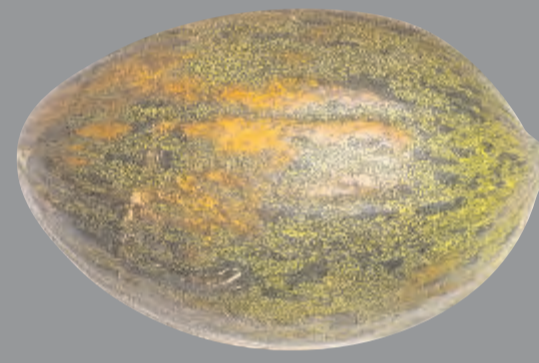
8

9

10

Manchas

Gravidade da ocorrência de manchas

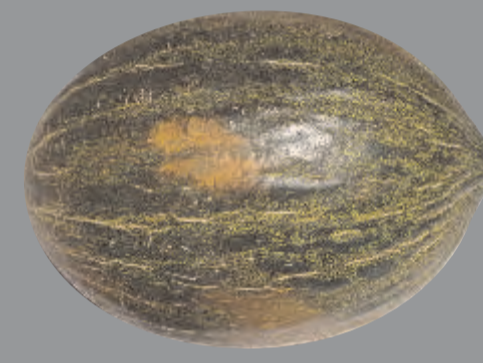


Grave

1

2

3



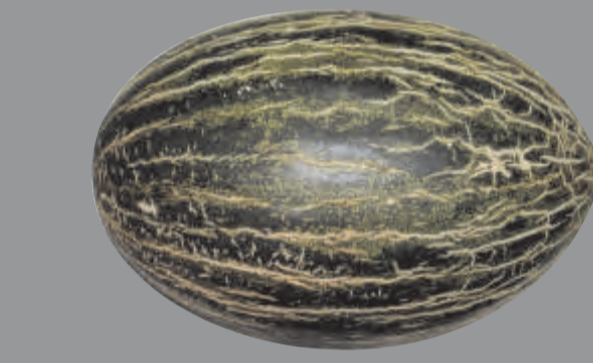
Leve

4

5

6

7



Ausente

8

9

10

Sanidade

Ocorrência de desordens patológicas e fisiológicas da polpa

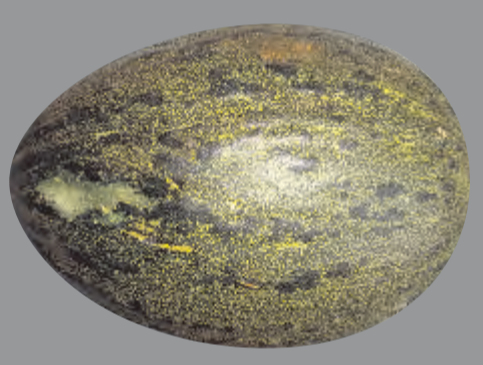


Início de Podridão

1

2

3



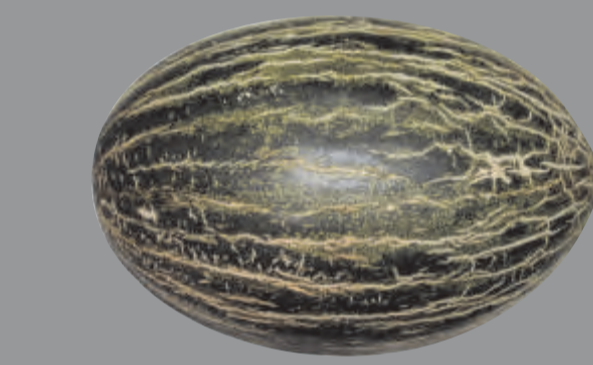
Lesão Aberta

4

5

6

7



Sadio

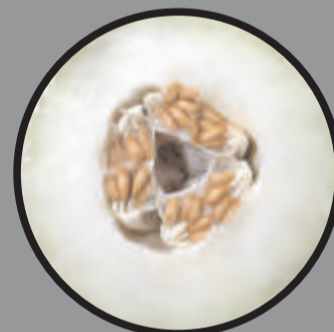
8

9

10

Qualidade do Lóculo

Tamanho e formato da cavidade do fruto

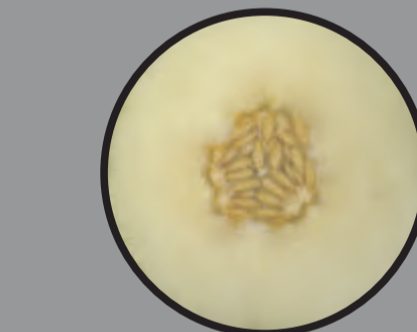


Ruim

1

2

3



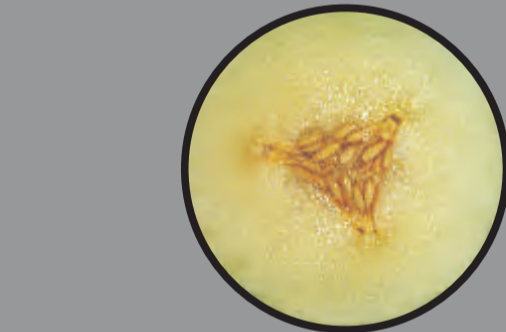
Média

4

5

6

7



Boa

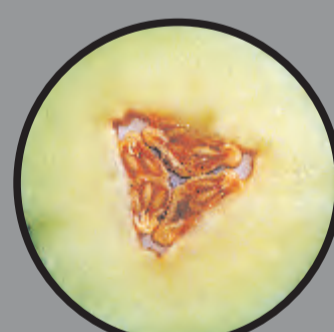
8

9

10

Coloração da Polpa

Desenvolvimento da coloração da polpa

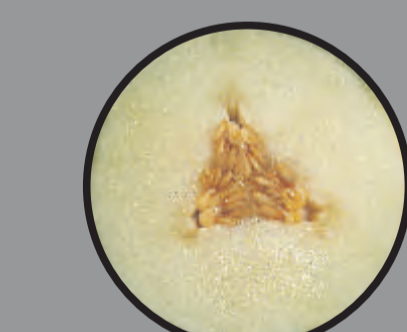


Esverdeada

1

2

3



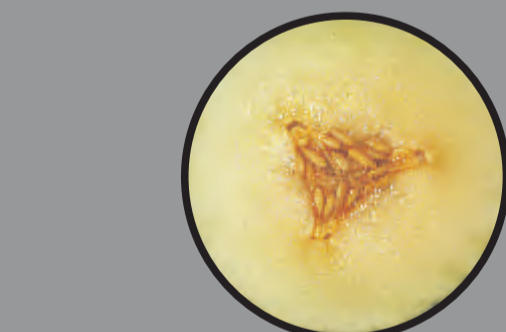
Branca

4

5

6

7



Amarelada

8

9

10

Sementes Soltas

Fixação das sementes no lóculo

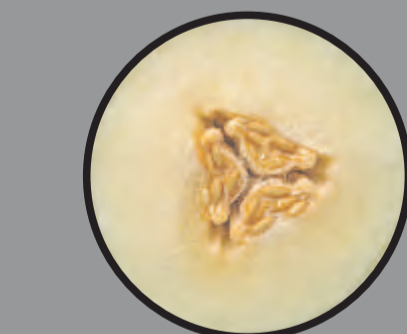


Solta

1

2

3



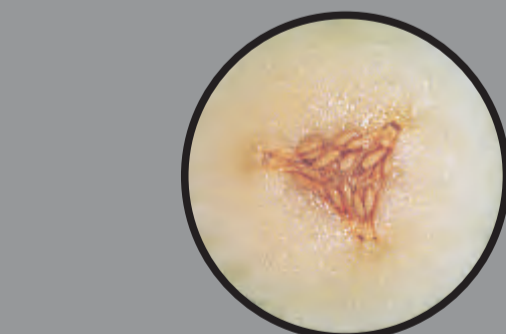
Levemente Solta

4

5

6

7



Presas

8

9

10

Vitrificação da Polpa

Gravidade de áreas translúcidas ou vitrificadas na polpa



Vitrificada

1

2

3



Levemente Vitrificada

4

5

6

7



Não Vitrificada

8

9

10

Conteúdo de Sólidos Solúveis

Medido em ° Brix

10° Brix

1

2

3

12° Brix

4

5

6

7

14° Brix

8

9

10

Uniformidade de frutos na caixa

Coloração - Formato - Tamanho

Baixa

1

2

3

Média

4

5

6

7

8

Alta

9

10

Confiabilidade

Estabilidade de oferta e qualidade do produto pelo produtor

Baixa

1

2

3

Média

4

5

6

7

8

Alta

9

10