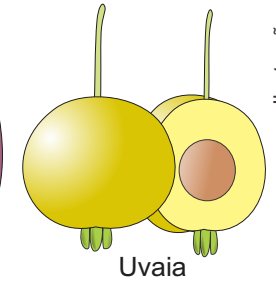
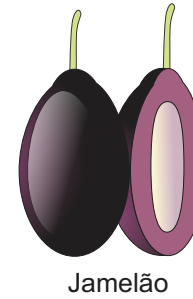
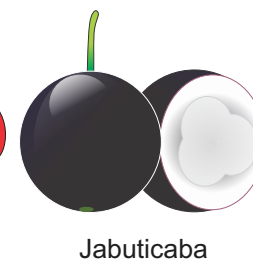
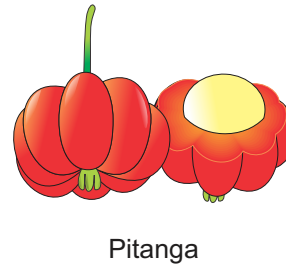
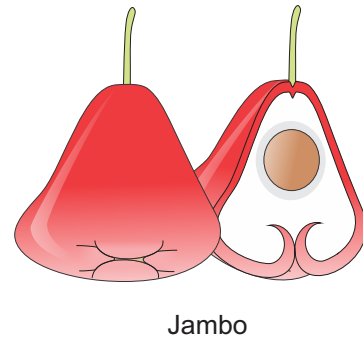
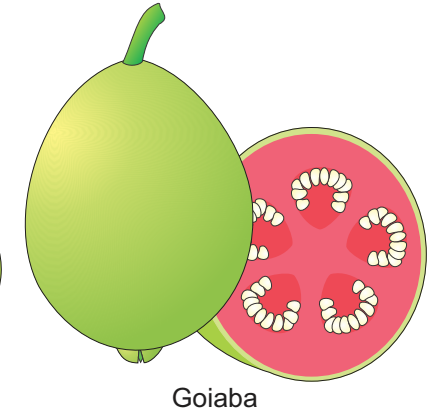
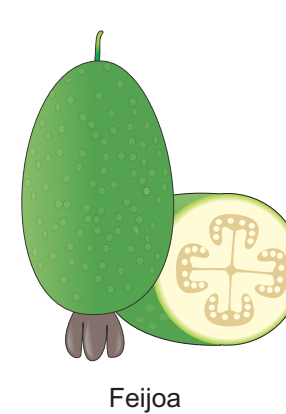
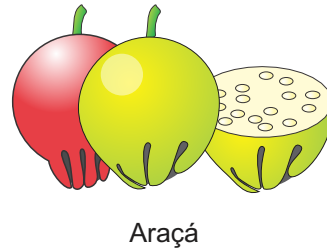
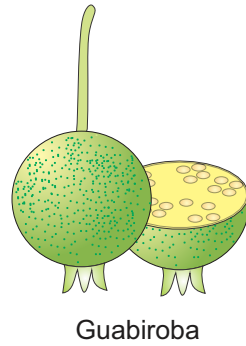
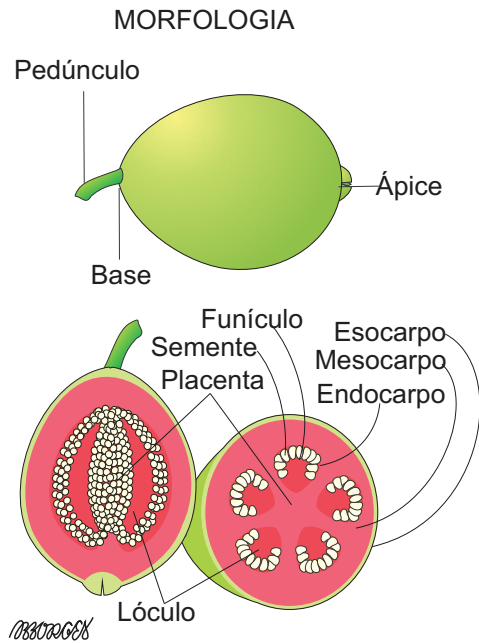


PRINCIPAIS MIRTÁCEAS COMERCIALIZADAS NA CEAGESP



Ilustrações: Bertoldo Borges Filho

Produto	Nome científico	Formato	Coloração da casca	Coloração da polpa	Sabor
Guabiroba	<i>Campomanesia adamantium</i>	Globoso	Verde, amarelada, arroxeadas	Translúcida	Doce acidulado
Araçá	<i>Psidium cattleianum</i>	Globoso	Verde e vermelha	Translúcida	Doce acidulado
Feijoa	<i>Acca sellowiana</i>	Elipsóide	Verde	Branca	Doce
Goiaba	<i>Psidium guajava</i>	Globoso a piriforme	Verde a amarela	Branca, amarela e vermelha	Doce acidulado
Jambo	<i>Syzygium samarangense</i>	Piriforme	Branca, rosada, vermelha e roxa	Branca	Adocicado
Pitanga	<i>Eugenia pitanga</i>	Globoso costada	Vermelha brilhante	Vermelha	Doce acidulado
Jabuticaba	<i>Myrciaria jaboticaba</i>	Globoso	Preta e rajada	Translúcida	Doce
Jamelão	<i>Syzygium cumini</i>	Oblongo	Arroxeadas escuras	Arroxeadas	Adocicado adstringente
Uvaia	<i>Eugenia pyriformis</i>	Globoso a piriforme	Amarela	Amarela	Ácido a doce